

## GST-Tag Rabbit Polyclonal Antibody

Catalog	PMK107M	PMK107S	Tel : Tel :400-457-3801
Quantity	50μL	100μL	E-mail: <a href="mailto:postmaster@biopmk.com">postmaster@biopmk.com</a>
			Web: <a href="http://www.biopmk.com">www.biopmk.com</a>

**For research use only.**

Applications	Species Cross-Reactivity	Molecular Weight	Isotype
WB	N/A	N/A	IgG

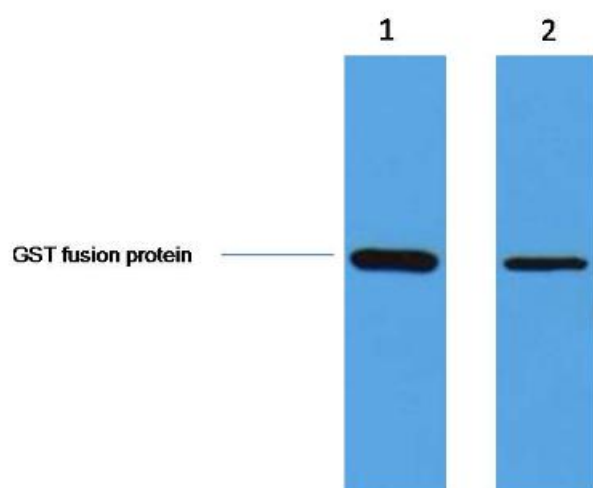
**Storage Buffer & Condition:** PBS, pH 7.4, containing 0.02% sodium azide as Preservative and 50% Glycerol.  
Store at -20°C. Do not aliquot the antibody.

**Recommended dilutions:** WB: 1:5,000

**Optimal dilutions should be determined by the end user.**

**Specificity:** The GST tag antibody can recognize C-terminal, internal, and N-terminal GST fusion proteins.

**Background:** The glutathione S-transferase (GST, previously known as ligandins) family of enzymes are composed of many cytosolic, mitochondrial, and microsomal proteins. GSTs are present in eukaryotes and in prokaryotes, where they catalyze a variety of reactions and accept endogenous and xenobiotic substrates. GST tag antibody can be helpful in detecting the fusion protein during purification as well as the cleavage of GST from the protein of interest. GST tag antibody has wide applications that could include your research on GST proteins or GST fusion recombinant proteins.



0.5ug GST fusion protein+ Primary antibody dilution at

1、 1:5,000

2、 1:10,000

<b>Application:</b>	WB-Western blot	IHC-Immunocytochemistry				IF-Immunofluorescence		IP-Immunoprecipitation		ChIP-Chromatin Immunoprecipitation	
<b>Reactivity:</b>	H-Human	R-Rat	M-Mouse	Mk-Monkey	Dg-Dog	Ch-Chicken		Hm-Hamster	Rb-Rabbit	Sh-Sheep	Pg-Pig